

LTCC Surface Mount T/R Module

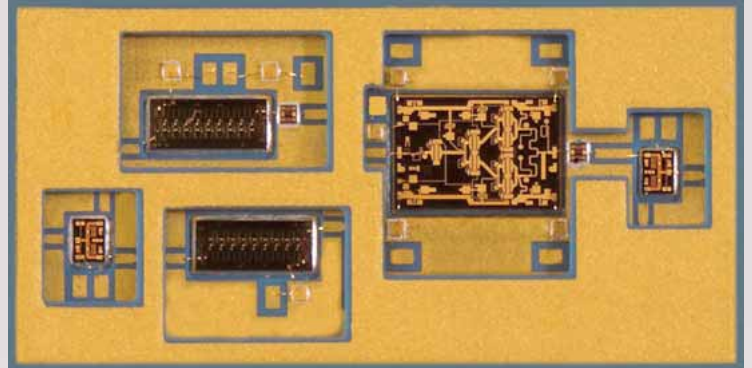


www.barryltcc.com

LTCC Surface Mount T/R Module

Features:

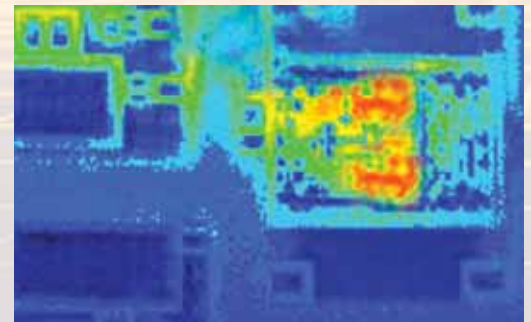
- Compact Design
- Low Profile
- Surface Mount
- High Frequency
- High Power
- Integrated Passive Components
- Internal Bias and Control Routing



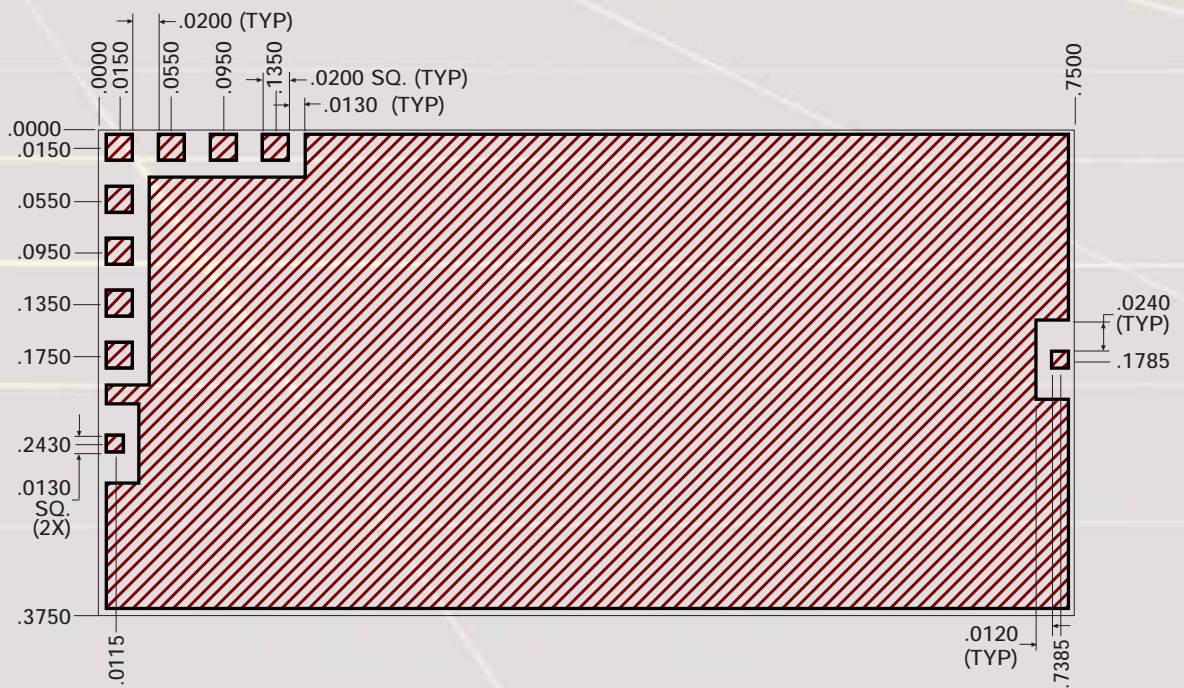
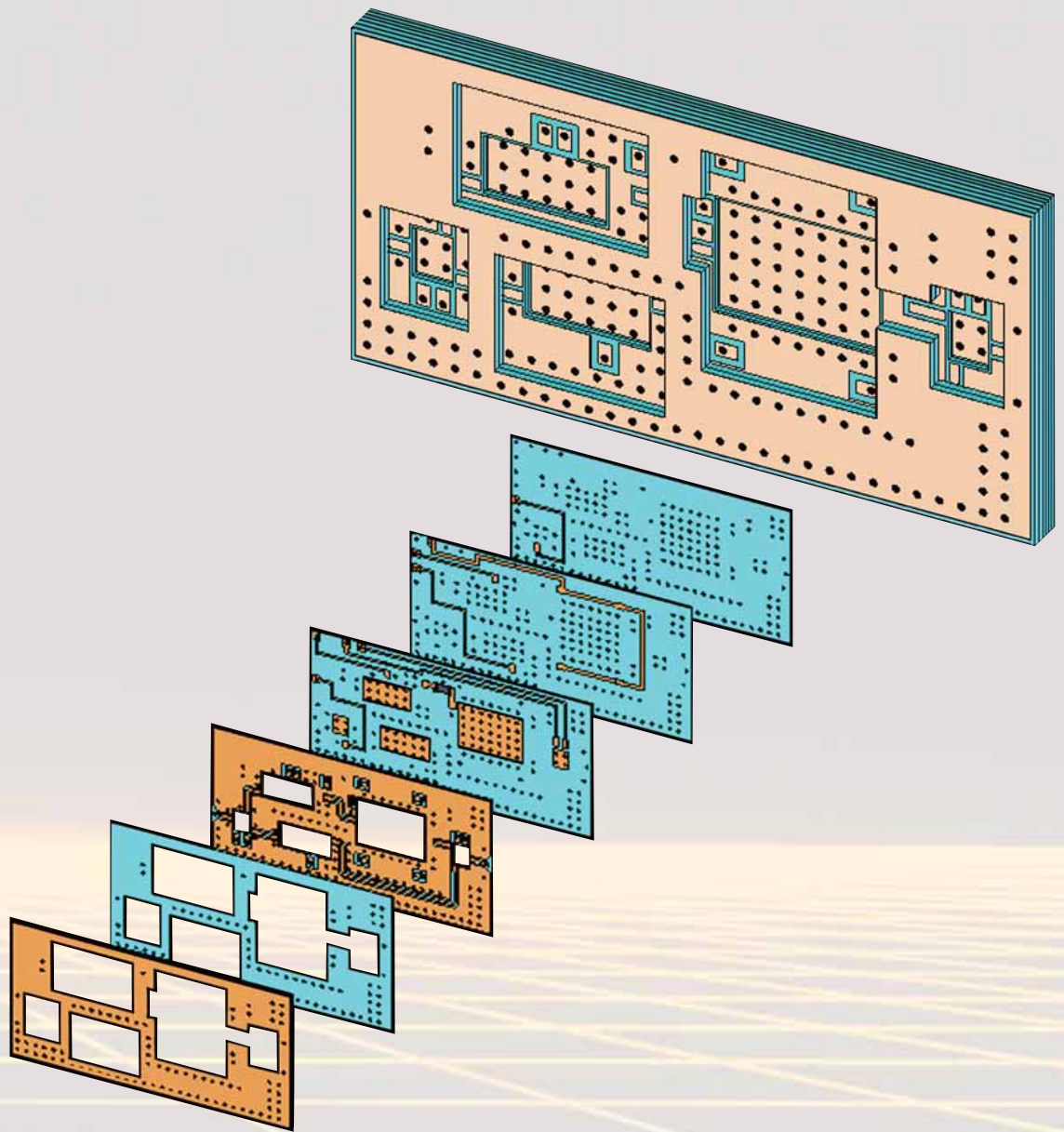
General Description:

This one (1) watt LTCC (Low Temperature Cofired Ceramic) T/R module demonstrates Barry Industries' superior capabilities for design and fabrication. This module incorporates internal resistors and complex routing of internal control and bias lines, which simplify assembly wirebond and module attachment. The module also features a broadband RF transition applicable to circuits ranging from 1-20 GHz. By applying appropriate thermal vias under critical heat sources, the junction temperature of the GaAs PA is maintained at or below 125 degrees C. With a state-of-the-art LTCC foundry, Barry Industries has the capability to design from customer concepts or build-to-print based on customer specifications, with exceptional quality and reliability.

Low Thermal Impedance

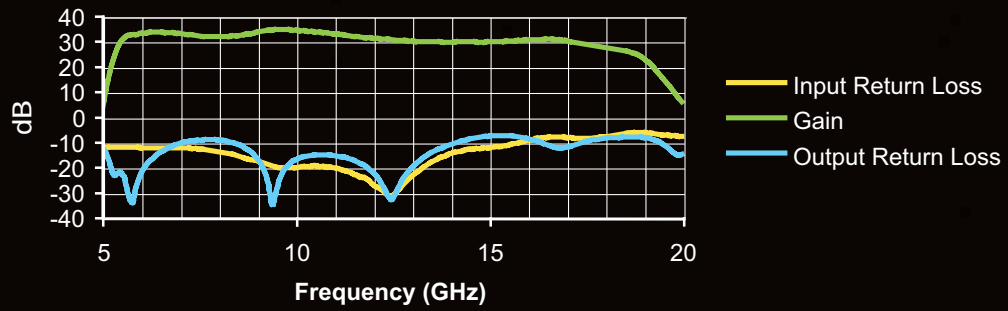


Parameter	Min.	Typ.	Max.	Units
Frequency Range	10	N/A	16	GHz
Return Loss	-10	-12	-15	dB
Gain	25	28	30	dB
Output Power	27	29	30	dBm
Drain Current	1.1	1.3	1.5	A
Drain Voltage	7	8	9	V
Gate Voltage	-3	-2	-1	V
Operating Temperature	N/A	120	125	°C

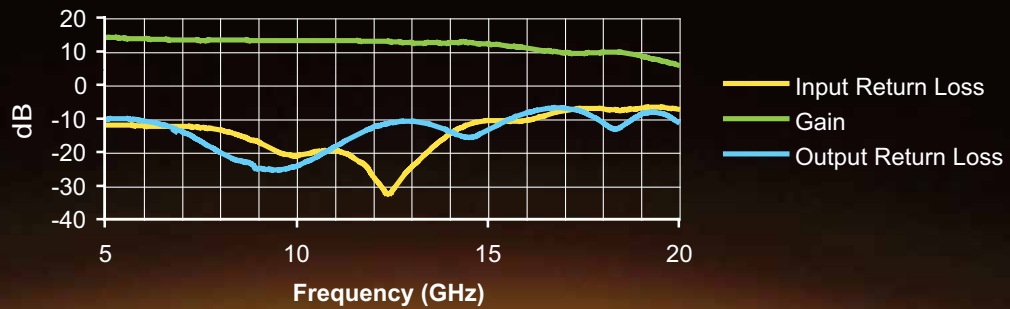


Measurement Data - LTCC T/R Module

Tx Path



Rx Path



ISO 9001:2000 Certified



Barry Industries, Inc. • 60 Walton St. • Attleboro, MA 02703 • Phone: 508-226-3350 • Fax: 508-226-3317

www.barryltcc.com