

TRAMPS



TRAMPS™ TETRA Measurement Solution

Using TRAMPS, it is possible to present in a coherent format using GIS mapping or building plans, the QoS (quality of service) indications and accurate RSSI (received signal strength indication) measurements captured by the CatchAll™ receiver.

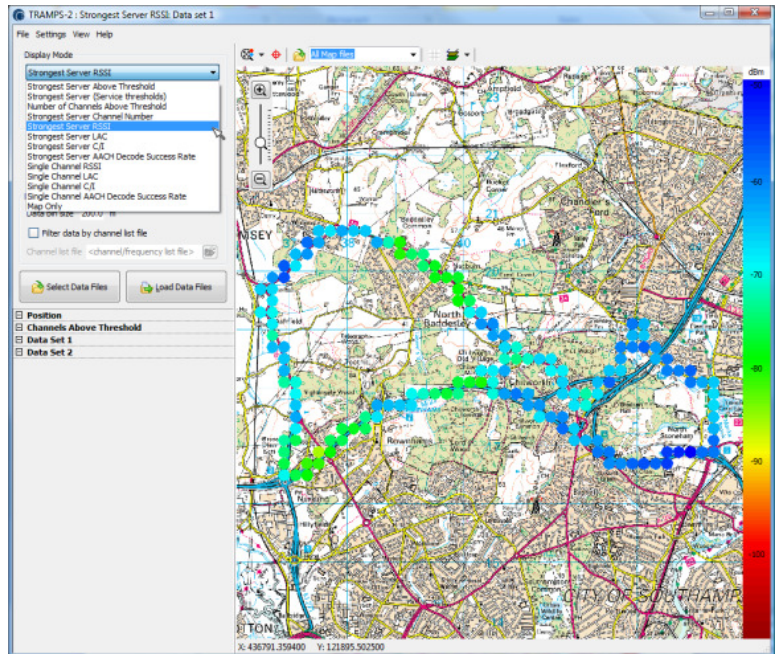
Overview

MAC Ltd's CatchAll receiver is the benchmark RSSI measurement receiver for TETRA networks deployed worldwide.

To complement the CatchAll receiver, MAC Ltd developed TRAMPS, an analysis tool with unique capabilities. Taking the RSSI and decoded control channel data collected by the CatchAll receiver, TRAMPS provides a suite of intuitive, off-line analysis modes designed to provide rapid, manufacturer- and network-independent coverage and QoS information that is easy to interpret and can be compared with a benchmark.

This unique combination of equipment and software simultaneously captures all the data necessary for accurate RSSI measurement and QoS indication. Amongst many features, it identifies neighbour cells that are actually present within each cell permitting comparison with those that the

Strongest Server RSSI Values



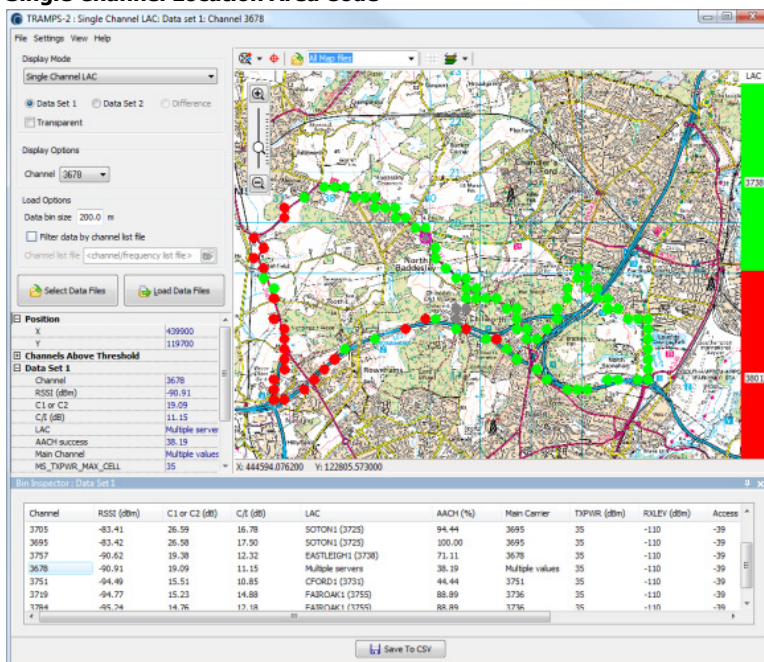
Map reproduced by permission of Ordnance Survey on behalf of HMSO. Crown copyright and database right 2004. All rights reserved. Ordnance Survey License number 100006863.

network expects to be present to highlight potential problems.

TRAMPS provides coverage and QoS indications rapidly, consistently and objectively using one application to perform tests that normally require several items of test equipment, thereby avoiding the consequences of collecting information that is not readily comparable.

One of the key features of TRAMPS is its simple GIS presentation of the analysis data, which ensures the rapid identification and the geographic location of potential RF coverage issues.

Single Channel Location Area Code



Map reproduced by permission of Ordnance Survey on behalf of HMSO. Crown copyright and database right 2004. All rights reserved. Ordnance Survey License number 100006863.

Features

- Track network changes easily
- Compare today's network to a baseline
- Locate areas of poor C/I
- Identify actual neighbours
- Identify interfering base stations
- Verify the serving cell identity
- Go/No-go indications
- User-defined threshold settings
- Inbuilt comprehensive analysis tool

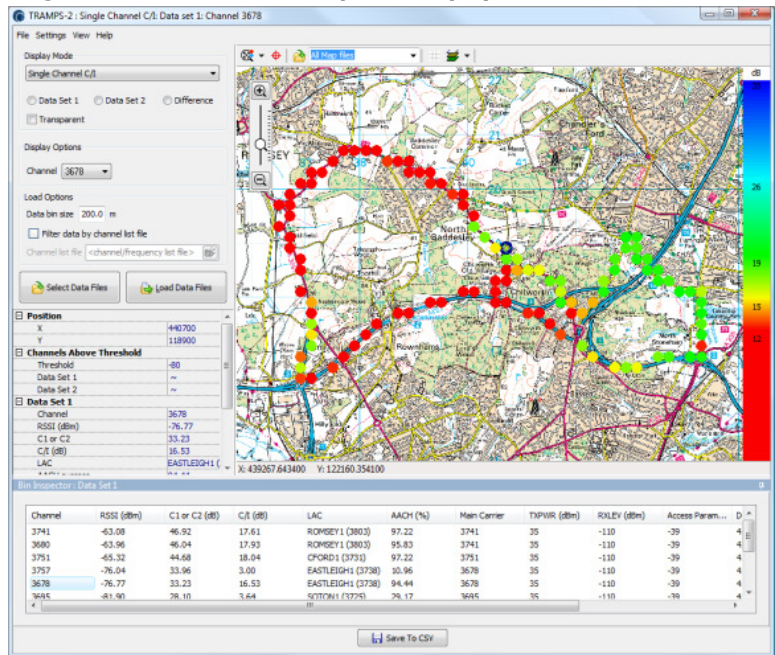
Product Description

Designed for those users and service providers who need to be informed about changes in radio coverage and quality in a straightforward way, and yet require a tool with the inherent technical capability to provide indicators to help determine how and why those changes have appeared.

TRAMPS provides an efficient means of displaying captured drive test data and comparing the results of different drive tests of the same area. TRAMPS is based on MapInfo's MapX® technology and is compatible with digital maps in a wide range of formats.

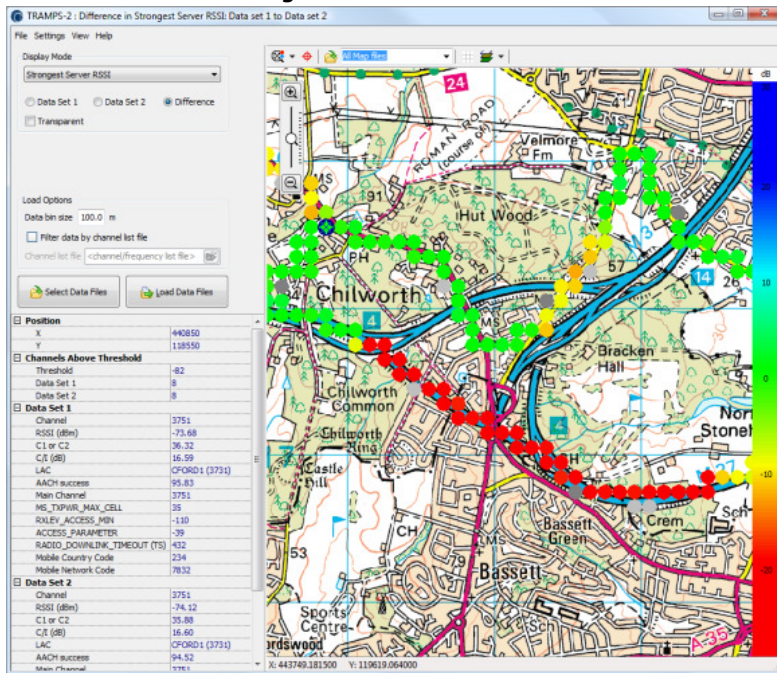
TRAMPS enables before and after comparisons for a range of parameters, using an earlier set of drive test data as a baseline for comparison with recent drive test data for the same geographical region. These data sets may have been collected several hours or many months apart. With this facility any changes to network performance become immediately apparent.

Single Channel C/I and Bin Inspector Display



Map reproduced by permission of Ordnance Survey on behalf of HMSO. Crown copyright and database right 2004. All rights reserved. Ordnance Survey License number 100006863.

Difference between Strongest Server RSSI Values



Map reproduced by permission of Ordnance Survey on behalf of HMSO. Crown copyright and database right 2004. All rights reserved. Ordnance Survey License number 100006863.

TRAMPS is also compatible with MAC Ltd's CRIBS™ TETRA walk-test solution, providing the same analysis facilities overlaid on a map or building plan.

Whilst the map overlays provide summary data, the detailed information that has been collected by the CatchAll receiver is easily accessible using the Bin Inspector function. By simply clicking on any data point all of the information available for that location is displayed in a tabular format below the map. This display is illustrated in the screenshot above.

The combination of the CatchAll receiver and TRAMPS provides a significant step improvement in the information available to those who have a responsibility for the provision of a reliable radio system. TRAMPS affords a cost-effective and proactive method for regular provision of comparative information.

© MapInfo MapX is a registered trademark of Bowes MapInfo Corporation
™ CatchAll, CRIBS and TRAMPS are trademarks of Multiple Access Communications Limited



www.mac ltd.com

Multiple Access Communications Limited
Delta House, Southampton Science Park
Southampton, SO16 7NS
United Kingdom

Tel: +44 23 8076 7808
Fax: +44 23 8076 0602
Email: enquiries@mac ltd.com